

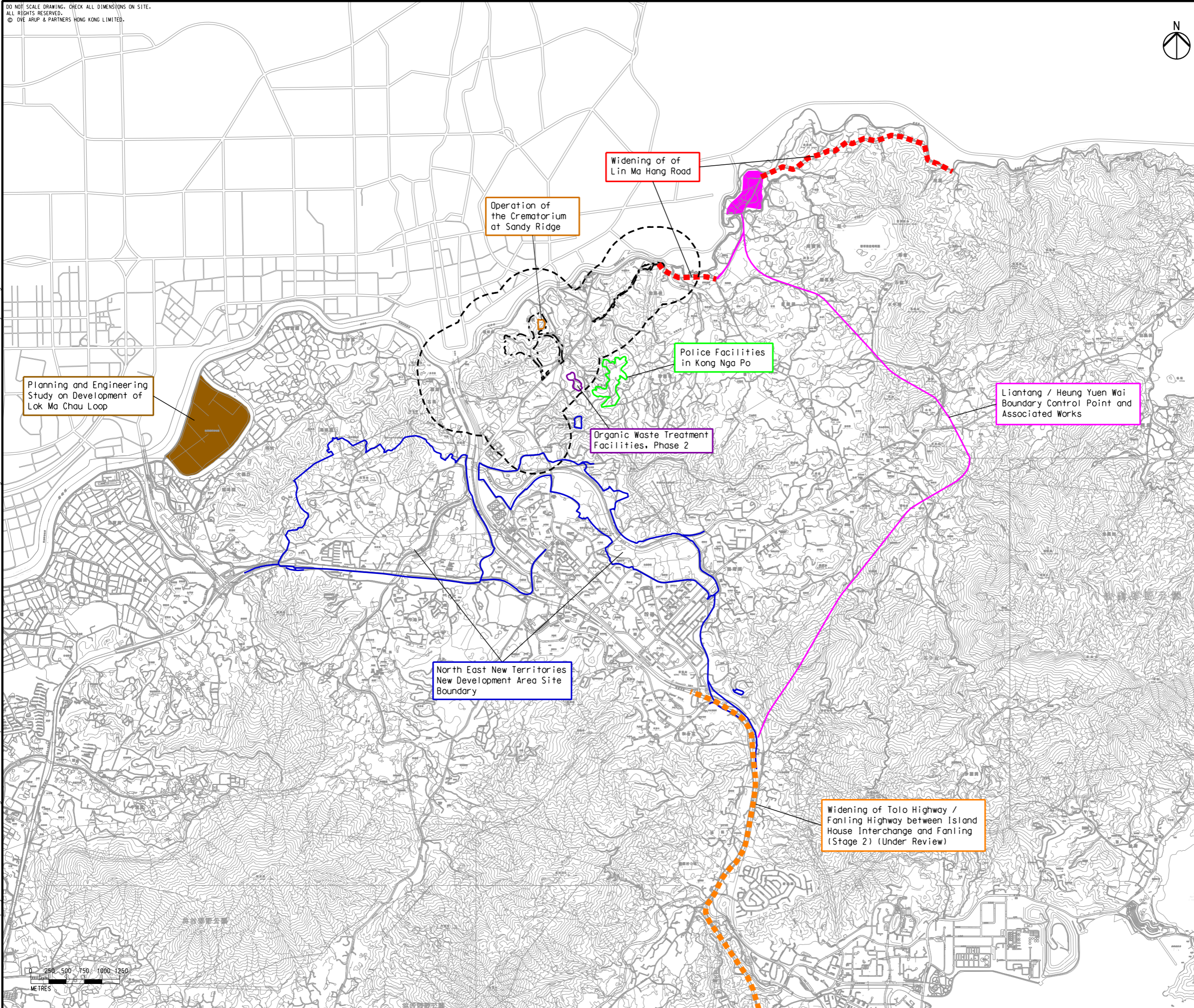
DO NOT SCALE DRAWING. CHECK ALL DIMENSIONS ON SITE.
ALL RIGHTS RESERVED.
© DVE ARUP & PARTNERS HONG KONG LIMITED.



Legend

- Project Boundary
- 500m Assessment Area
- Operation of the Crematorium at Sandy Ridge
- North East New Territories New Development Area Site Boundary
- Liantang / Heung Yuen Wai Boundary Control Point and Associated Works
- Planning and Engineering Study on Development of Lok Ma Chau Loop
- Organic Waste Treatment Facilities, Phase 2
- Police Facilities in Kong Nga Po
- Widening of Tolo Highway / Fanling Highway between Island House Interchange and Fanling (Stage 2) (Under Review)
- Widening of Lin Ma Hang Road

Printed by : 2/29/2016
Filename : G:\env\project\231448\13 Drawing Deliverables\Reports\015 EIA\20160229 Revised FinalEIA_v1\Ch 1 Intro\Figure 1.5 - Locations of Concurrent Projects.dgn



E	FIFTH ISSUE	GL	02/16
D	FOURTH ISSUE	GL	12/15
C	THIRD ISSUE	GL	02/15
B	SECOND ISSUE	GL	11/14
Rev	Description	By	Date

Consultant
ARUP

Contract No. and Title:
Agreement No. CE 1/2013(CE)
Site Formation and Associated Infrastructural Works for Development of Columbarium, Crematorium and Related Facilities at Sandy Ridge Cemetery - Design and Construction

Drawing title
Locations of Concurrent Projects

Drawing no. Figure 1.5		Rev. E	
Drawn GL	Date 02/16	Checked EL	Approved ST
Scale 1:50000 @A3		Status PRELIMINARY	

COPYRIGHT RESERVED

土木工程拓展署
Civil Engineering and Development Department

